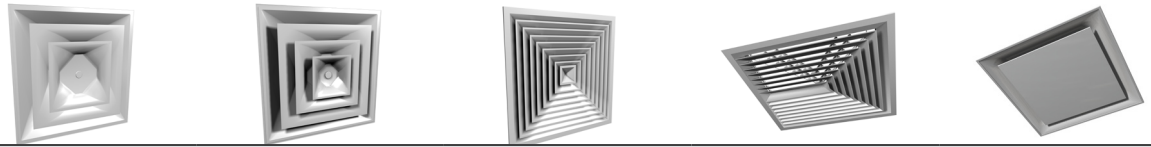
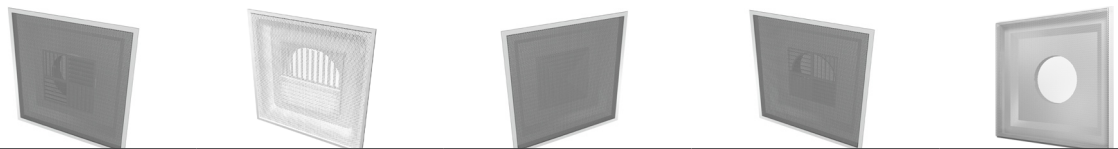


PRODUCT QUICK SELECT



DESCRIPTION	3-CONE DIFFUSER SCD (3C)	4-CONE DIFFUSER SCD (4C)	LOUVERED FACE DIFFUSER SMD	HIGH INDUCTION LOUVERED FACE DIFFUSER SMX	PLAQUE FACE DIFFUSER SPD
6"Ø IN A 24" X 24"	78 - 205 CFM	78 - 205 CFM	6" x 6" / 75 - 124 CFM	6" x 6" / 75 - 124 CFM	79 - 244 CFM
8"Ø IN A 24" X 24"	140 - 342 CFM	140 - 342 CFM	9" x 9" / 169 - 280 CFM	9" x 9" / 169 - 280 CFM	140 - 326 CFM
10"Ø IN A 24" X 24"	218 - 498 CFM	218 - 498 CFM	12" x 12" / 300 - 498 CFM	12" x 12" / 300 - 498 CFM	218 - 407 CFM
12"Ø IN A 24" X 24"	314 - 665 CFM	314 - 665 CFM	15" x 15" / 469 - 778 CFM	15" x 15" / 469 - 778 CFM	314 - 489 CFM
CATALOG VOLUME & PAGE	Vol. 1, C9	Vol. 1, C9	Vol. 1, C91	Vol. 1, C118	Vol. 1, C19

Selections based on NC 35 or less and total pressure not to exceed 0.1". Common sizes shown, please refer to catalog for other sizes.



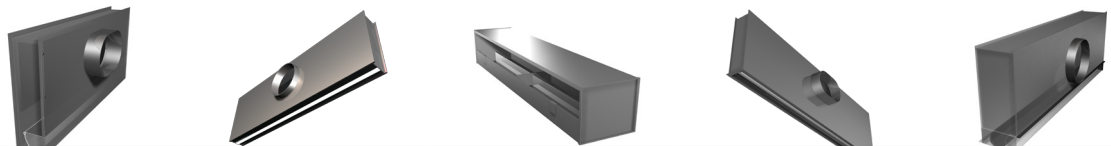
DESCRIPTION	PERFORATED DIFFUSER (FACE-MOUNTED PATTERN DEFLECTORS) PDF	PERFORATED DIFFUSER (CURVED-VANE PATTERN DEFLECTORS) PDC	PERFORATED DIFFUSER (STAR SHAPED PATTERN) PDSP	PERFORATED DIFFUSER (NECK-MOUNTED PATTERN DEFLECTORS) PDN	PERFORATED RETURN DIFFUSER PDDR
6"Ø IN A 24" X 24"	59 - 195 CFM	59 - 151 CFM	59 - 137 CFM	59 - 165 CFM	39 - 151 CFM
6" X 6" IN A 24" X 24"	75 - 231 CFM	75 - 189 CFM	75 - 171 CFM	75 - 184 CFM	50 - 192 CFM
8"Ø IN A 24" X 24"	105 - 292 CFM	105 - 257 CFM	105 - 232 CFM	105 - 257 CFM	70 - 269 CFM
8" X 8" IN A 24" X 24"	133 - 346 CFM	133 - 322 CFM	133 - 289 CFM	133 - 317 CFM	89 - 342 CFM
10"Ø IN A 24" X 24"	164 - 399 CFM	164 - 389 CFM	164 - 349 CFM	164 - 362 CFM	109 - 420 CFM
10" X 10" IN A 24" X 24"	208 - 473 CFM	208 - 486 CFM	208 - 434 CFM	208 - 482 CFM	139 - 535 CFM
12"Ø IN A 24" X 24"	236 - 515 CFM	236 - 545 CFM	236 - 450 CFM	236 - 480 CFM	157 - 605 CFM
CATALOG VOLUME & PAGE	Vol. 1, C49	Vol. 1, C57	Vol. 1, C43	Vol. 1, C33	Vol. 1, C73

Selections based on NC 35 or less and total pressure not to exceed 0.1". Common sizes shown, please refer to catalog for other sizes.



DESCRIPTION	MODULAR CORE DIFFUSER SMCD	CURVED-VANE DIFFUSER SCVD	DDC-CONTROLLED, SELF-MODULATING VAV DIFFUSER PRODIGY	ADJUSTABLE ROUND CONE DIFFUSER RCD	2-POSITION ROUND CONE DIFFUSER RCDE
	6" x 6" / 50 - 123 CFM	6" x 6" / 20 - 140 CFM	6"Ø	6"Ø / 79 - 171 CFM	6"Ø / 79 - 155 CFM
	8" x 8" / 89 - 219 CFM	8" x 8" / 35 - 183 CFM	8"Ø	8"Ø / 140 - 305 CFM	8"Ø / 140 - 245 CFM
	10" x 10" / 139 - 343 CFM	10" x 10" / 60 - 324 CFM	10"Ø	10"Ø / 218 - 477 CFM	10"Ø / 218 - 421 CFM
	12" x 12" / 200 - 494 CFM	12" x 12" / 85 - 455 CFM	12"Ø	12"Ø / 314 - 887 CFM	12"Ø / 314 - 615 CFM
	14" x 14" / 272 - 672 CFM	14" x 14" / 125 - 655 CFM	14"Ø	14"Ø / 428 - 936 CFM	14"Ø / 428 - 695 CFM
	16" x 16" / 356 - 878 CFM	16" x 16" / 155 - 802 CFM		16"Ø / 559 - 1222 CFM	16"Ø / 559 - 975 CFM
	18" x 18" / 450 - 1111 CFM	18" x 18" / 450 - 1101 CFM		18"Ø / 707 - 1547 CFM	18"Ø / 707 - 12v95 CFM
CATALOG VOLUME & PAGE	Vol. 1, C125	Vol. 1, C133	Vol. 4, G31-G44	Vol. 1, C141	Vol. 1, C143

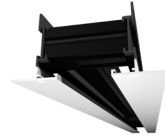
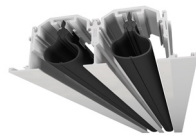
Selections based on NC 35 or less and total pressure not to exceed 0.1". See catalog for other sizes. Sq. to Rnd. transitions available.



DESCRIPTION	PLENUM-SLOT DIFFUSER (AERODYNAMIC PATTERN CONTROLLER) TBD2	PLENUM-SLOT DIFFUSER ("ICE-TONG" PATTERN CONTROLLER) TBD3	PLENUM-SLOT DIFFUSER (SINGLE-VANE PATTERN CONTROLLER) TBD4	PLENUM-SLOT DIFFUSER (HIGH-INDUCTION PATTERN CONTROLLER) TBD6	PLENUM-SLOT DIFFUSER (FIXED LOUVER PATTERN CONTROLLER) TBD7
	Horizontal Ceiling Pattern	180° Pattern Control	Tight Horizontal Pattern Control	Fixed Hor. Pattern for Exterior Zones	Fixed Pattern for High Air Capacity
CATALOG VOLUME & PAGE	Vol. 1, B11	Vol. 1, B16	Vol. 1, B30	Vol. 1, B46	Vol. 1, B52

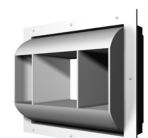
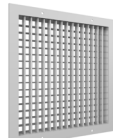
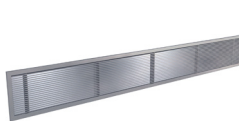
Please refer to catalog for sizing.

PRODUCT QUICK SELECT



DESCRIPTION	MULTI-SLOT LINEAR DIFFUSER SDS	CUSTOM FLOW LINEAR SLOT DIFFUSER AS/JS	CURVED CUSTOM FLOW LINEAR SLOT DIFFUSER AS/JS	CURVED CUSTOM T-BAR LINEAR SLOT DIFFUSER AST/JST	4-WAY CUSTOM FLOW LINEAR DIFFUSER ASM
CATALOG VOLUME & PAGE	Vol. 1, A43	Vol. 1, A7	Vol. 1, A21	Vol. 1, A17	Vol. 1, A19

Please refer to catalog.



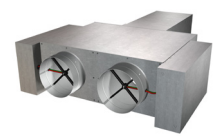
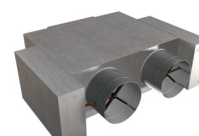
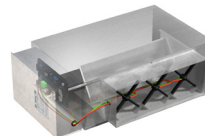
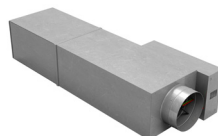
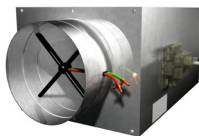
DESCRIPTION	LINEAR BAR GRILLE LBP (H)	DOUBLE-DEFLECTION SUPPLY GRILLE 520	45° DEFLECTION RETURN GRILLE 530	EGG-CRATE RETURN GRILLE 80	DRUM LOUVER HCD
CATALOG VOLUME & PAGE	Vol. 1, A72	Vol. 1, D13	Vol. 1, D13	Vol. 1, D39	Vol. 1, D104

Please refer to catalog.



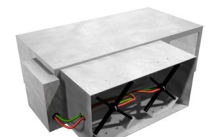
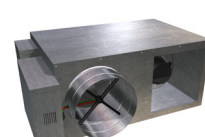
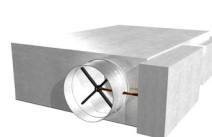
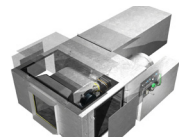
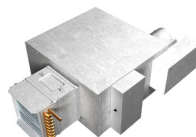
DESCRIPTION	LAMINAR FLOW DIFFUSER LFD/LFD2	FLUSH-FACE RADIAL FLOW DIFFUSER FRFD	ADJUSTABLE FLUSH-FACE RADIAL FLOW DIFFUSER RAVD	RADIAL FLOW LAMINAR DIFFUSER RFD	LINEAR AIR CURTAIN DIFFUSER HORD
CATALOG VOLUME & PAGE	Vol. 2, E78	Vol. 2, E96	Vol. 2, E106	Vol. 2, E88	Vol. 2, E62

Please refer to catalog.



DESCRIPTION	SINGLE-DUCT VAV BOX S*V	SINGLE-DUCT, QUIET SERIES EXHAUST BOX S*VQ	SINGLE-DUCT, QUIET LOW PROFILE VAV BOX S*LVP	DUAL-DUCT VAV BOX D*S	DUAL-DUCT, QUIET SERIES VAV BOX D*Q
UNIT SIZE 6	0 - 450 CFM	0 - 450 CFM	0 - 450 CFM	66 - 400 CFM	66 - 400 CFM
UNIT SIZE 8	0 - 800 CFM	0 - 800 CFM	0 - 800 CFM	132 - 750 CFM	132 - 750 CFM
UNIT SIZE 10	0 - 1350 CFM	0 - 1350 CFM	0 - 1350 CFM	221 - 1300 CFM	221 - 1300 CFM
UNIT SIZE 12	0 - 2100 CFM	0 - 2100 CFM	0 - 2100 CFM	313 - 1900 CFM	313 - 1900 CFM
UNIT SIZE 14	0 - 3000 CFM	0 - 3000 CFM	0 - 3000 CFM	431 - 2900 CFM	431 - 2900 CFM
CATALOG VOLUME & PAGE	Vol. 3, F46	Vol. 3, F92	Vol. 3, F119	Vol. 3, F213	Vol. 3, F213

*Enter either P, D or E for pneumatic, digital or electronic control. CFM ranges not based on NC levels, please refer to catalog.



DESCRIPTION	FAN-POWERED, CONSTANT VOLUME BOX F*C	FAN-POWERED, CONSTANT VOLUME, QUIET SERIES BOX F*CG	FAN-POWERED, CONSTANT VOLUME, LOW PROFILE BOX F*CLP	FAN-POWERED, VARIABLE VOLUME BOX F*V	FAN-POWERED, VARIABLE VOLUME, LOW PROFILE BOX F*VLP
UNIT SIZE 10	n/a	50 - 300 CFM	50 - 350 CFM	n/a	n/a
UNIT SIZE 20	200 - 700 CFM	200 - 700 CFM	200 - 750 CFM	200 - 725 CFM	200 - 800 CFM
UNIT SIZE 30	400 - 1500 CFM	400 - 1500 CFM	300 - 1000 CFM	450 - 1600 CFM	900 - 2100 CFM
UNIT SIZE 40	650 - 2000 CFM	650 - 2000 CFM	800 - 1450 CFM	600 - 1550 CFM	1500 - 2700 CFM
UNIT SIZE 50	900 - 2500 CFM	900 - 2500 CFM	800 - 1900 CFM	775 - 2600 CFM	n/a
CATALOG VOLUME & PAGE	Vol. 3, F262	Vol. 3, F342	Vol. 3, F297	Vol. 3, F396	Vol. 3, F424

*Enter either P, D or E for pneumatic, digital or electronic control. Fan-powered CFM's based on optional high-efficiency ECM motors and no coils. CFM ranges not based on NC levels, please refer to catalog.